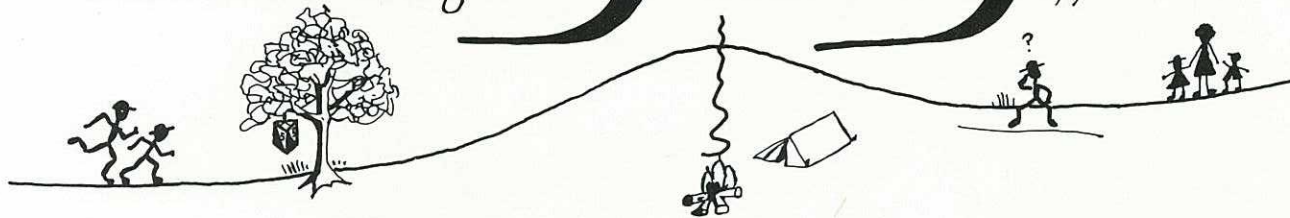
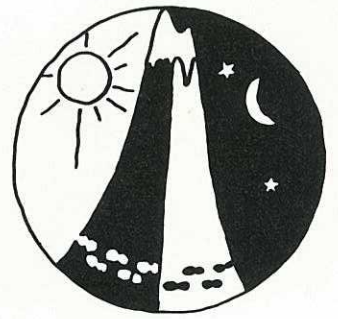


Everybody's

Winter 24 hour Rogaine

25th-26th June

1994.



Incorporating The Paddy Pallin
6hr School Championship.

LEGEND

Sealed road	
Gravel road	
Track	
Forest boundary	
Building	
Watercourse	
Dam	
Water drop	
Control	
Hash house	
Out of bounds	

SCALE 1 :50 000



Contour Interval 10m

SETTERS

Warren Smith
David La Cava
Roy Stone
Doug Allen

VETTERS

Jack Dowling
David Muir
Urs Duetschler
Martin Gray

CARTOGRAPHY

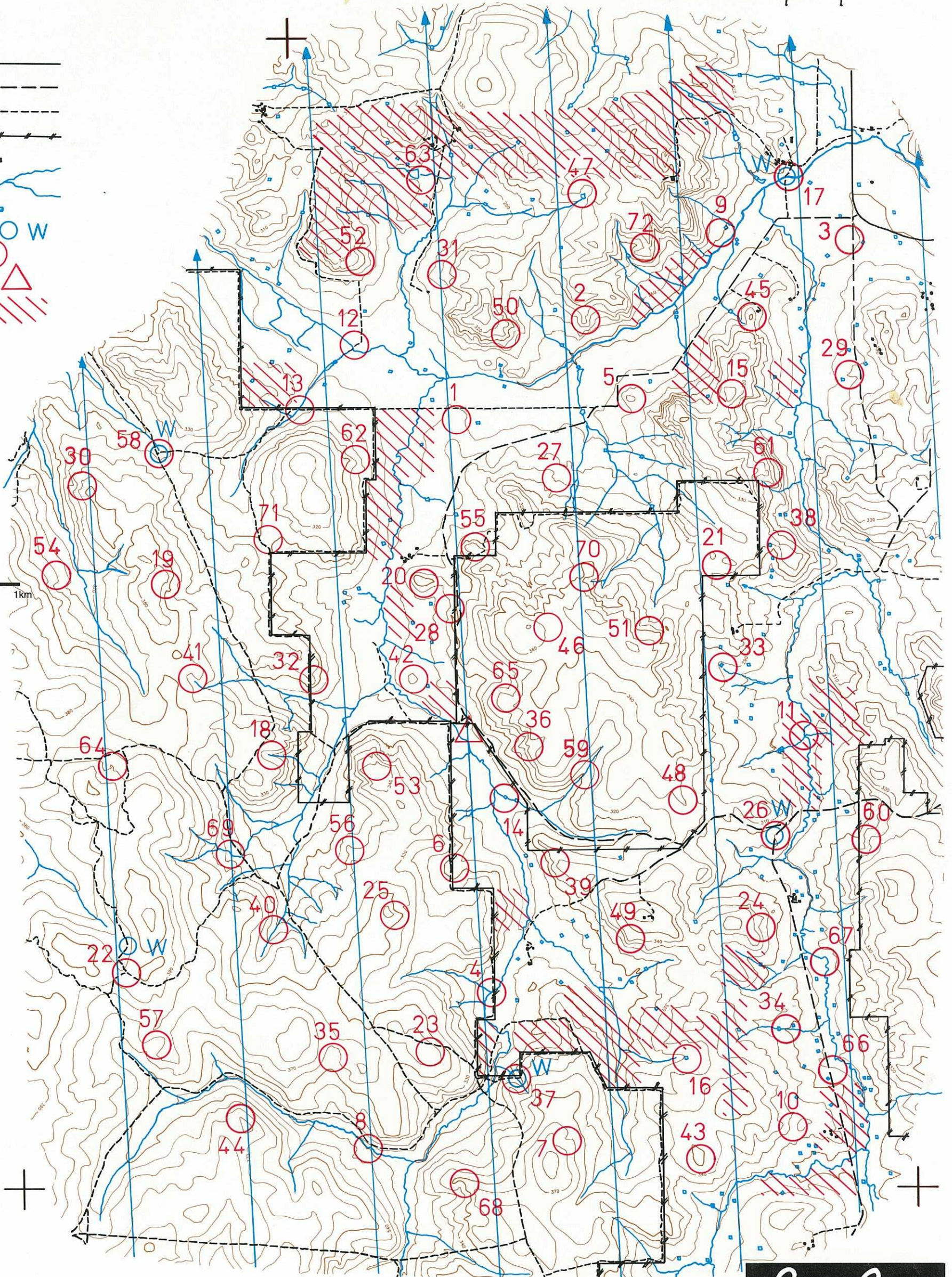
Roy Stone

ARTWORK

Yvonne Smith

ACKNOWLEDGEMENTS

Many thanks to the farmers for the use of their land and particularly Vinny Pike for the Hash House site. Thanks to Graham Abbot of DOLA, David Miller of Frank Daniels and Peter Gibson of CALM for their valuable assistance.



Paddy Pallin

THE LEADERS IN ADVENTURE

EVERYBODY'S ROGAINE - 25-26 JUNE 1994

ROGAINE CONTROLS

DESCRIPTION

POINTS ROGAINE CONTROLS

DESCRIPTION

POINTS

ROGAINE CONTROLS	DESCRIPTION	POINTS	ROGAINE CONTROLS	DESCRIPTION	POINTS
1	The broad knoll				
2	A rocky knoll	20	36	Head of steep section of gully	
3	Fallen tree north side of unmapped dam	20	37	Track/gully crossing 100m at 144 degrees	50
4	The creek junction	20	38	The saddle	50
5	A rocky knoll	20	39	Head of the gully	50
6	Track/gully/fence junction	20	40	Dead tree across gully	50
7	Water course in gully	20	41	Hollow jarrah tree at head of gully	50
8	A rock bar on the creek	30	42	The knoll	50
9	A rocky knoll	30	43	South east side of broad summit	50
10	The gully	30	44	N\Western end of knoll	60
11	Western water course meets creek	30	45	The knoll	60
12	30m north of track/river crossing	30	46	North western edge of rock surface 100*250m	60
13	Track/ creek junction	30	47	North of dam wall then 50m at 2deg	60
14	The dam, south west corner	30	48	The spur	60
15	The knoll	30	49	Top of rocky spur	60
16	The dam - 10 metres west	30	50	Boulder knoll	70
17	The bridge, south side	30	51	Centre of rock surface 100 * 60 metres	70
18	Head of the watercourse	30	52	The spur	70
19	Western edge of rock surface 70*50 metres	30	53	Head of the gully	70
20	The rocky knoll	40	54	Sth western edge of rock surface 300*100 metres	70
21	N.W. edge of N.W. rock surface 50*80 metres	40	55	The rocky knoll	70
22	The track junction 160m West. Water at junction	40	56	The spur	80
23	The summit	40	57	Black 2m stump in broad gully	80
24	In the middle watercourse	40	58	Track junction - 150 metres at 106 degrees	80
25	East end of knoll	40	59	In the watercourse, NE end of rock surface	80
26	Bend in the road, west side	40	60	Western foot of large rock surface 100m * 200m	80
27	A watercourse junction	40	61	Boulder cluster 3m high	80
28	Foot of shallow gully	40	62	A rocky spur	90
29	The rocky spur	40	63	A fence junction	90
30	Head of the gully	40	64	A small knoll	90
31	Fence/watercourse junction	40	65	On the ridge	90
32	A knoll	50	66	20 m north of tin shed on unmarked dam	90
33	Dam wall/south side	50	67	West side of major bend in watercourse	90
34	Under big tree, 50m east of dam	50	68	The spur	100
35	Head of broad gully	50	69	A creek junction	100
			70	The saddle	100
			71	The broad saddle	100
			72	Head of the gully	100